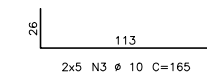
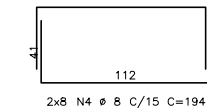
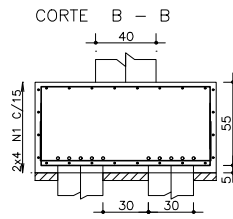
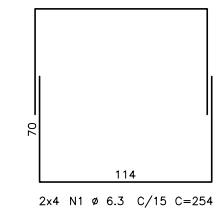
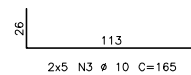
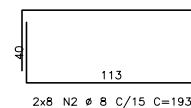
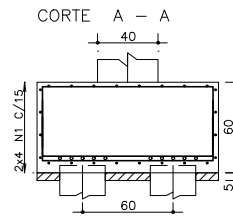
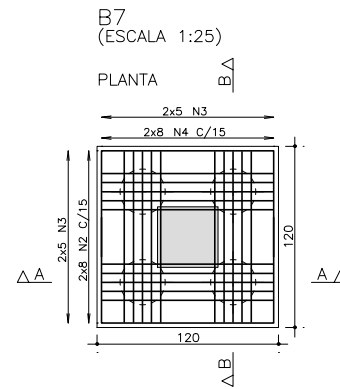
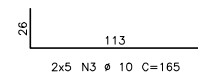
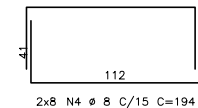
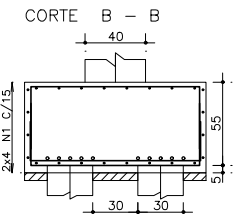
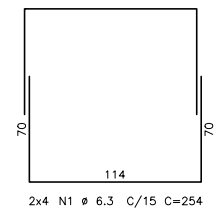
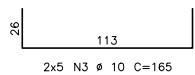
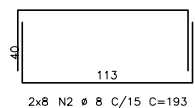
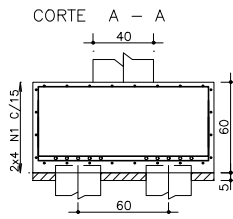
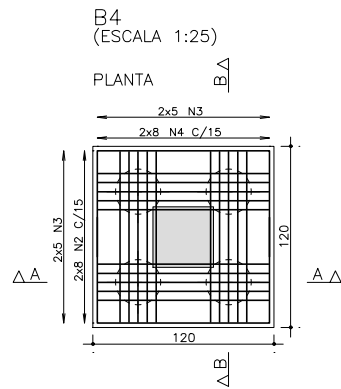
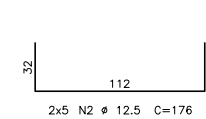
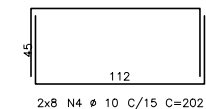
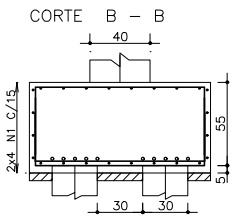
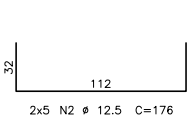
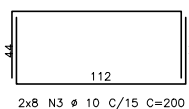
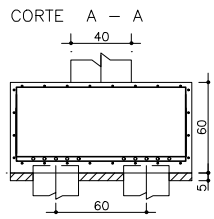
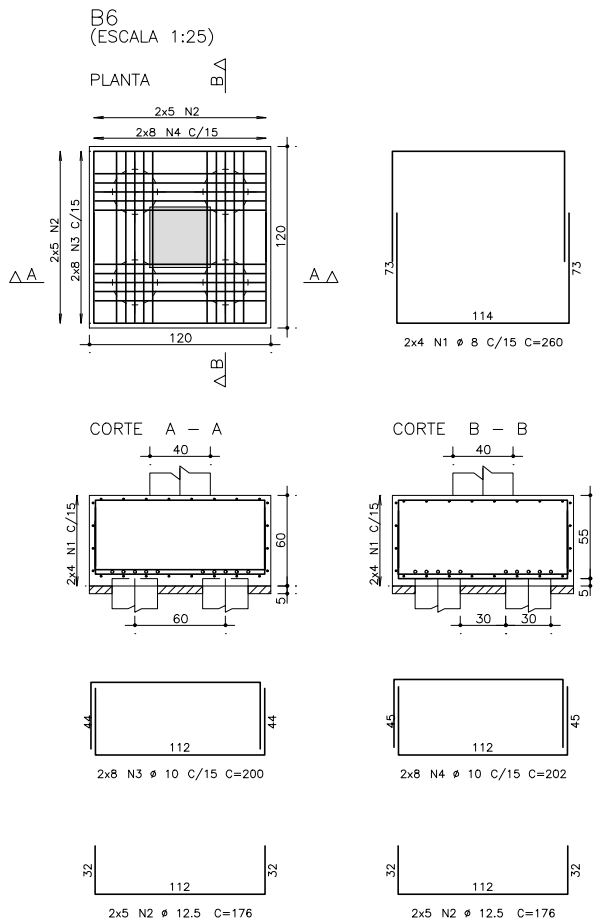


	AÇO	POS	BIT (mm)	QUANT	COMPRIMENTO	
					UNIT (cm)	TOTAL (cm)
B4	50A	1	6.3	8	254	2032
	50A	2	8	16	193	3088
	50A	3	10	20	165	3300
	50A	4	8	16	194	3104
B6	50A	1	8	8	260	2080
	50A	2	12.5	20	176	3520
	50A	3	10	16	200	3200
	50A	4	10	16	202	3232
B7	50A	1	6.3	8	254	2032
	50A	2	8	16	193	3088
	50A	3	10	20	165	3300
	50A	4	8	16	194	3104
B20	50A	1	8	8	260	2080
	50A	2	16	12	194	2328
	50A	3	10	16	200	3200
	50A	4	10	16	202	3232
B30	50A	1	10	6	268	1608
	50A	2	22	4	202	808
	50A	3	10	20	200	4000
	50A	4	22	4	206	824
	50A	5	10	20	202	4040

RESUMO AÇO CA 50-60			
AÇO	BIT (mm)	COMPR (m)	PESO (kg)
50A	6.3	41	10
50A	8	165	65
50A	10	291	180
50A	12.5	35	34
50A	16	23	37
50A	22	16	49
Peso Total		50A =	374 kg



fck 250. kg/cm2 - C25

		Schuring & Schuring Ltda.	
Schuring & Schuring		Escritório Técnico B.E.SCHURING - Projetos de Engenharia Av. XV de Novembro, 489 - Porto 2o. Andar - Cuiabá MT Fone:(065) 321 9959 - Fax:(065) 623 5066 - Email - schuring@terra.com.br	
PROJETO ESTRUTURAL	PROPRIETÁRIO:	PREFEITURA MUNICIPAL VARZEA GRANDE	
	RESP. TEC. EXECUÇÃO:	PROJETO ORLA DO PORTO ALAMEDA JULIO MULLER	
	AUTORES DO PROJETO:	OBRA: CENTRO CULTURAL	
	ASSUNTO:	FUNDÇÃO DET ARM BLOCOS	
	PECAS DETALHADAS	B4 / B6 / B7 / B20 / B30	
Benedito Eliseu Schuring Eng.Civil- CREA 715/D-MT		FCK: 250	DIETAS AUTOMATIZADAS
Andre Luiz Schuring Eng.Civil- CREA 8697/D-MT		ESCALA: 1:50	VERIFICAR MEDIDAS NA OBRA
		ARQUIVO:	DATA: 13/08/2018
			FOLHA No. 10